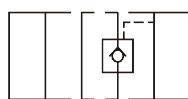


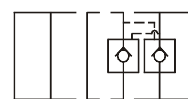
MPC疊加式液控單向閥



MPC-0\*-A



MPC-0\*-B



MPC-0\*-W

■ 規格說明

型 式	MPC-02-A/B/W	MPC-03-A/B/W
最高使用壓力	250kgf/cm <sup>2</sup> (3550psi)	
最大通過流量	40LPM(10.7GPM)	80LPM(21.3GPM)
開啓壓力(kgf/cm <sup>2</sup> )	1:0.5	2:5.0
流體過濾精度	25 Micron	
流體溫度範圍	0°C~ 55°C	
工作環境溫度	-25°C ~ 90°C	
流體黏度範圍	10-400 CST	
重 量 (kg)	1.4	3.0

## ■ 型號說明

**MPC - 02 - W - 10**

①                      ②                      ③                      ④

① 疊加式液控單向閥系列

② 通徑： 02:6mm    03:10mm

③ 控制油路：  
A：A孔  
B：B孔  
W：A及B孔

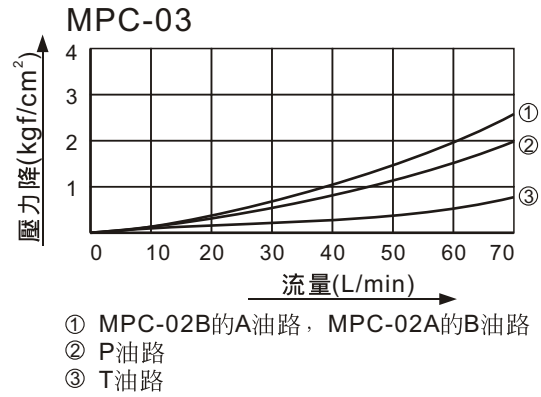
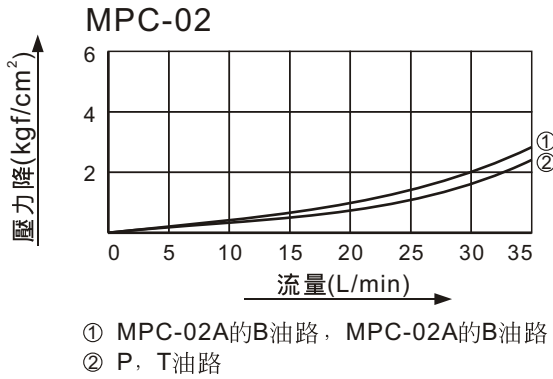
④ 設計型號



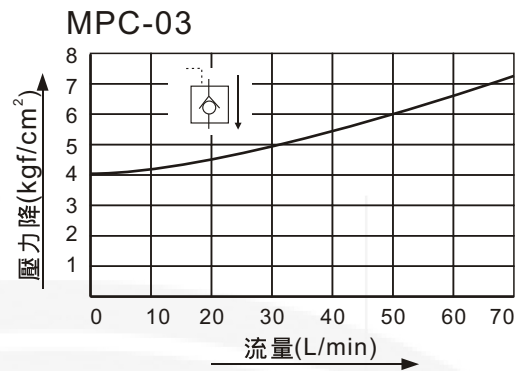
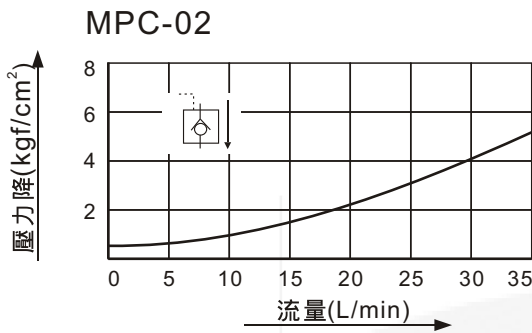
■ 特性曲綫

測試條件：35CST 溫度：50°C

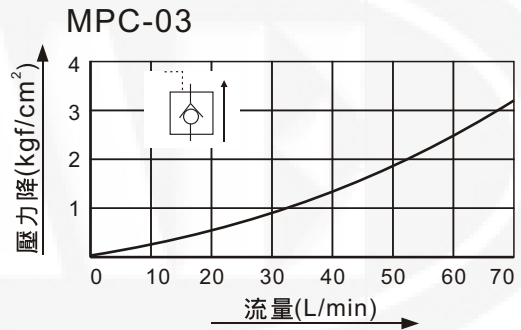
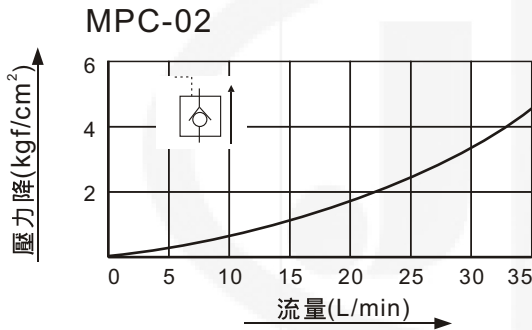
● 壓力降特性



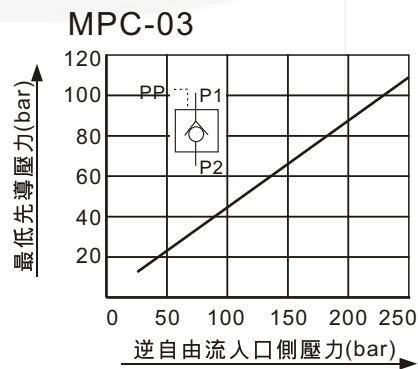
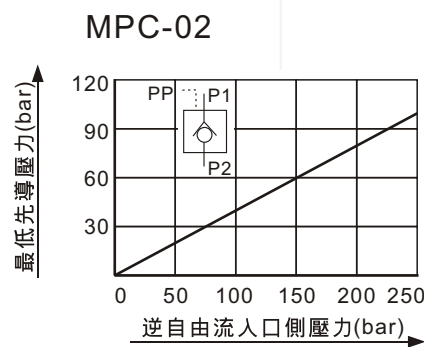
● 自由流壓力降特性



● 逆自由流壓力降特性

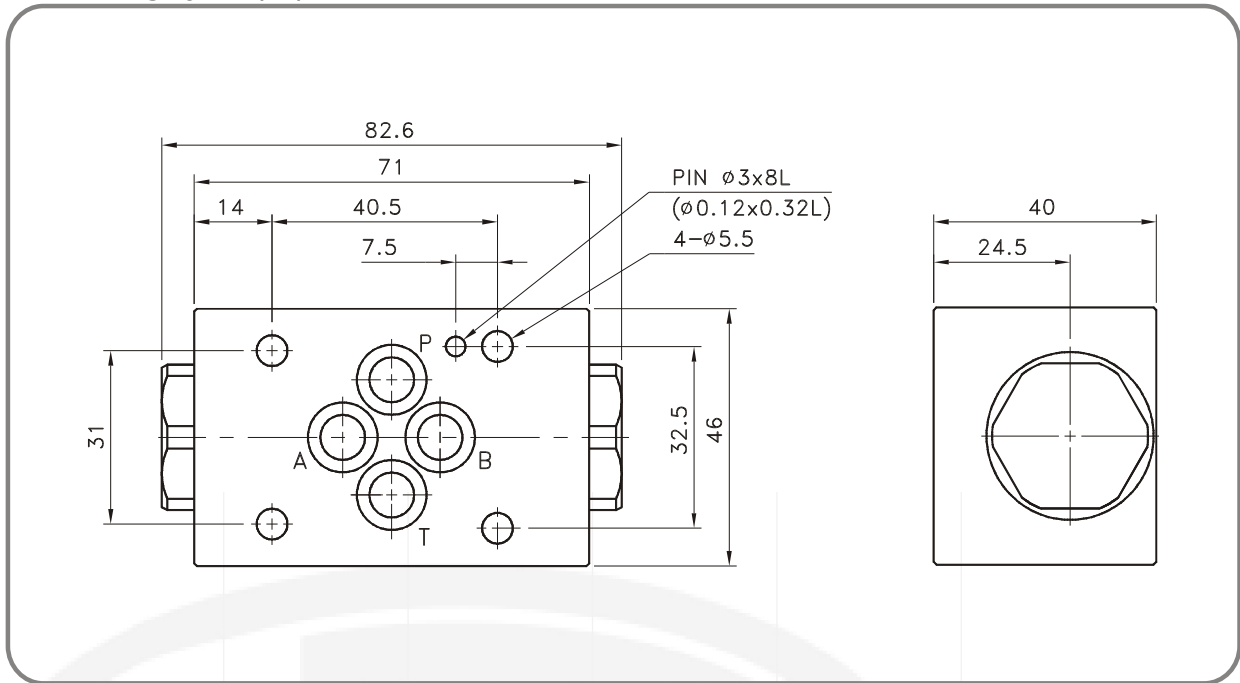


● 最低先導壓力特性



■ 尺寸圖

● MPC-02-A/B/W



● MPC-03-A/B/W

