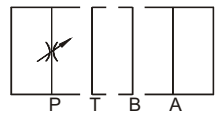
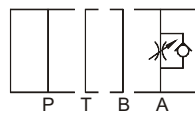


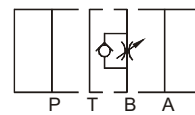
MT疊加式節流閥



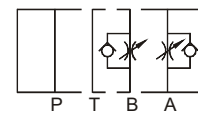
MT-0\*-P



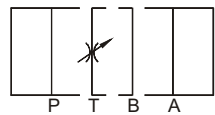
MTC-0\*-A



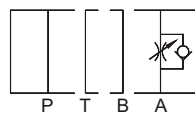
MTC-0\*-B



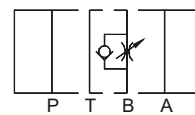
MTC-0\*-W



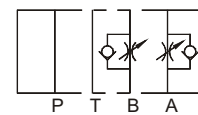
MT-0\*-T



MTC-0\*-A-I



MTC-0\*-B-I



MTC-0\*-W-I

■ 規格說明

型 式	MT-02-P/T/A/B	MT-02-W	MT-03-P/T/A/B	MT-03-W
最高使用壓力	250kgf/cm <sup>2</sup> (3550psi)			
最大通過流量	40LPM(10.7GPM)		80LPM(21.3GPM)	
流體過濾精度	25 Micron			
流體溫度範圍	0°C~ 55°C			
工作環境溫度	-25°C ~ 90°C			
流體黏度範圍	10-400 CST			
重 量 (kg)	1.3	1.5	2.8	3.0

## ■ 型號說明

**MT - 02 - W - I - K - 10**

①      ②      ③      ④      ⑤      ⑥

① 疊加式節流閥系列

② 通徑： 02:6mm    03:10mm

③ 控制油路：

P: P孔

T: T孔

A: A孔

B: B孔

W: A孔和B孔

④ 制流方向：

I: 入口流量控制

無: 出口流量控制

⑤ 調節型式：

K: 旋鈕

無: 螺絲調整鈕

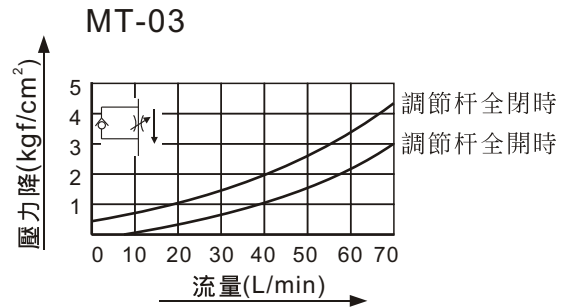
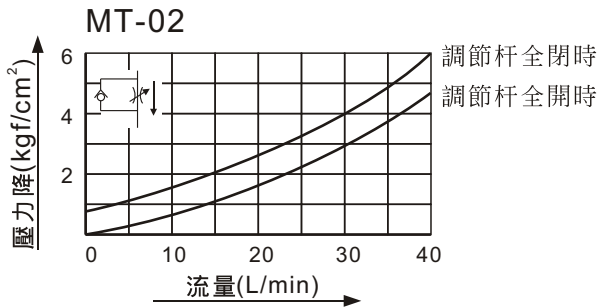
⑥ 設計型號



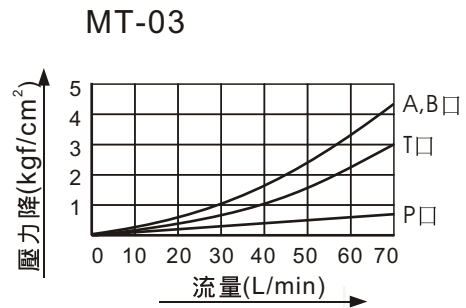
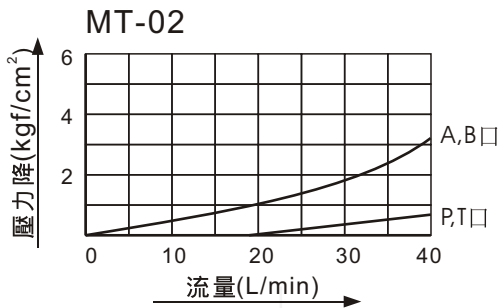
## ■ 特性曲綫

測試條件：35CST 溫度：50°C

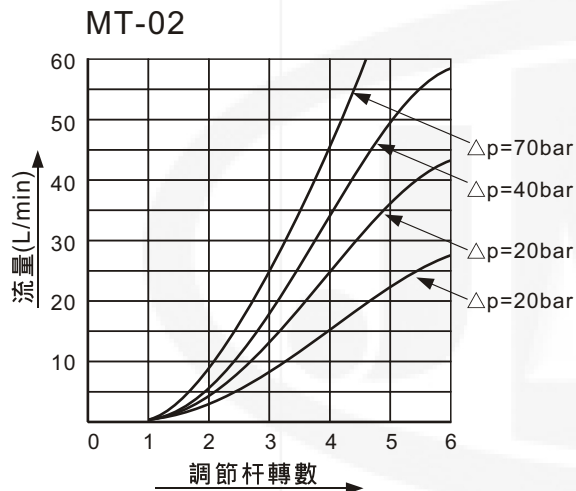
### ● 自由流之壓力降特性



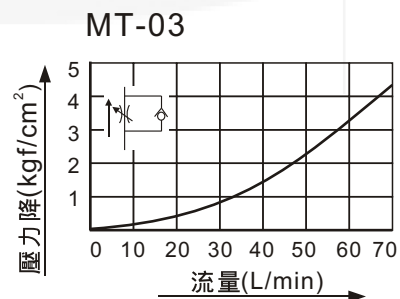
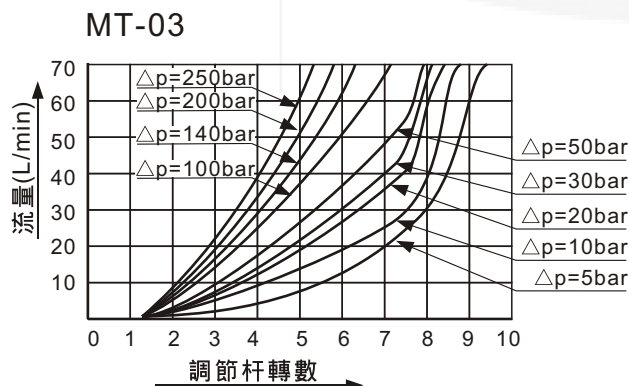
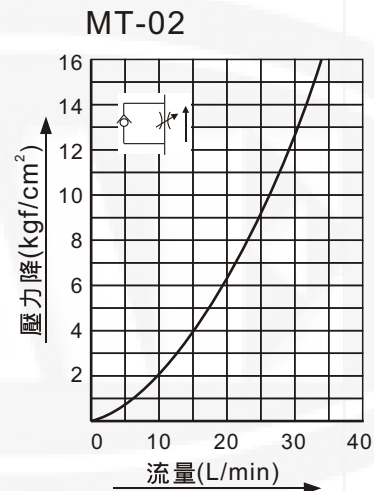
### ● 壓力降特性



### ● 節流旋鈕開度—流量特性曲綫

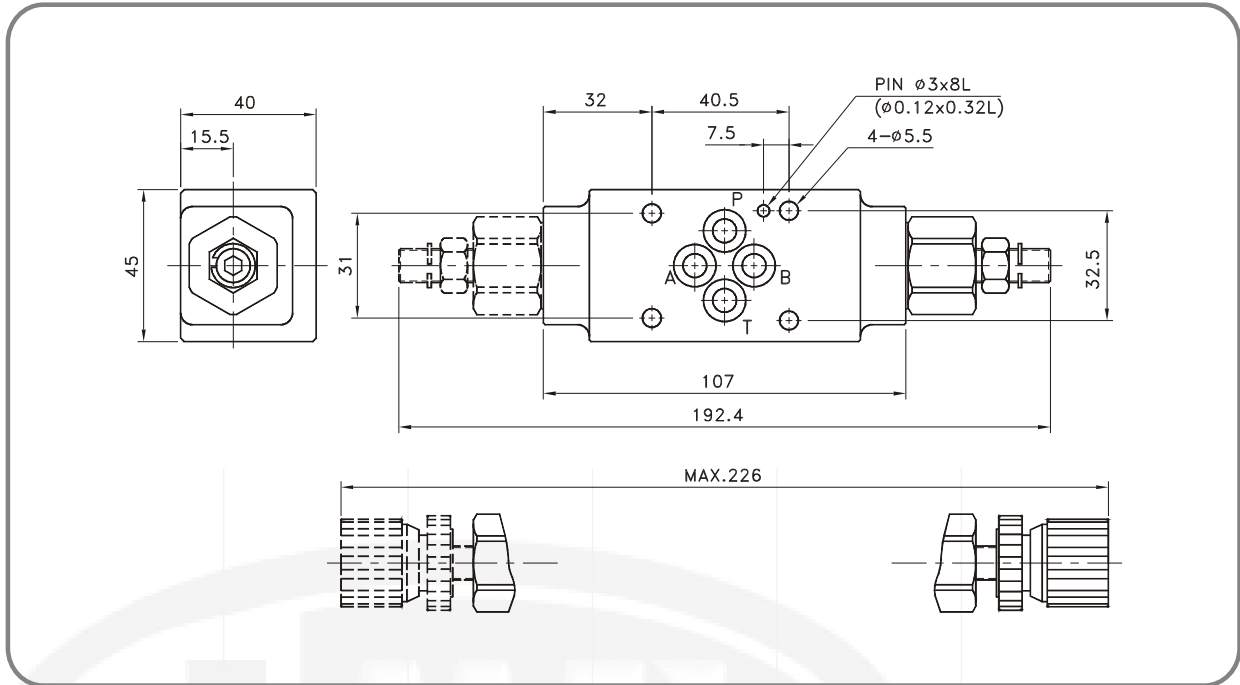


### ● 調節杆全開時壓力降特性



■ 尺寸圖

● MT-02



● MT-03

