

固定底板M03系列

型號說明

M03 - 03 - S - 1

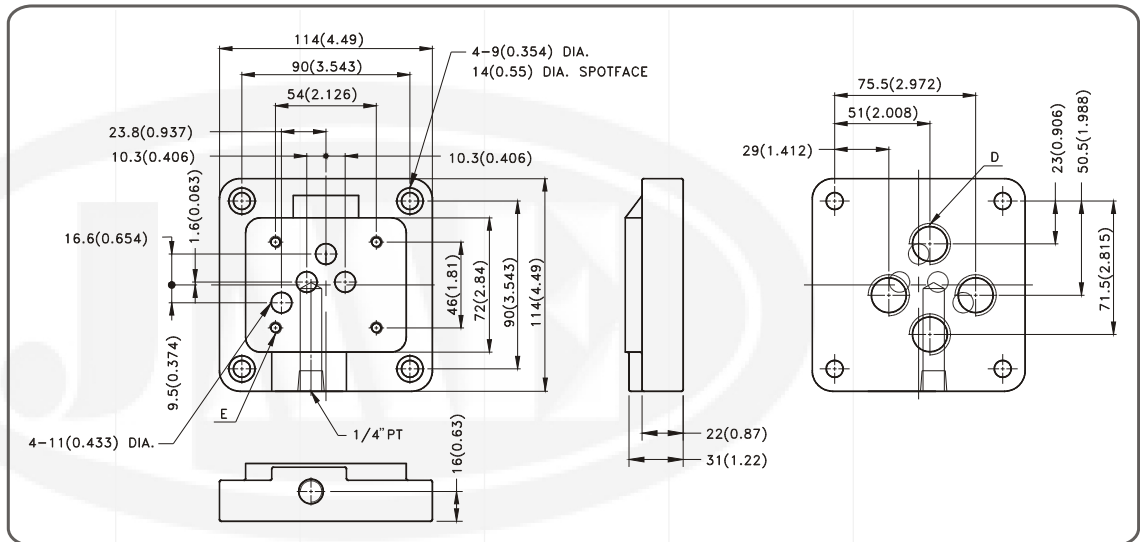
- 1
- 2
- 3
- 4

- ① 10通徑固定底板
- ② 配管口徑: 03:3/8" 04:1/2" 06:3/4"
- ③ 出口位置: S:側面出口 B:底部出口 SB:側面及底部出口
- ④ 管牙規格: 1:PT 2:NPT 3:SAE

安裝外型尺寸圖

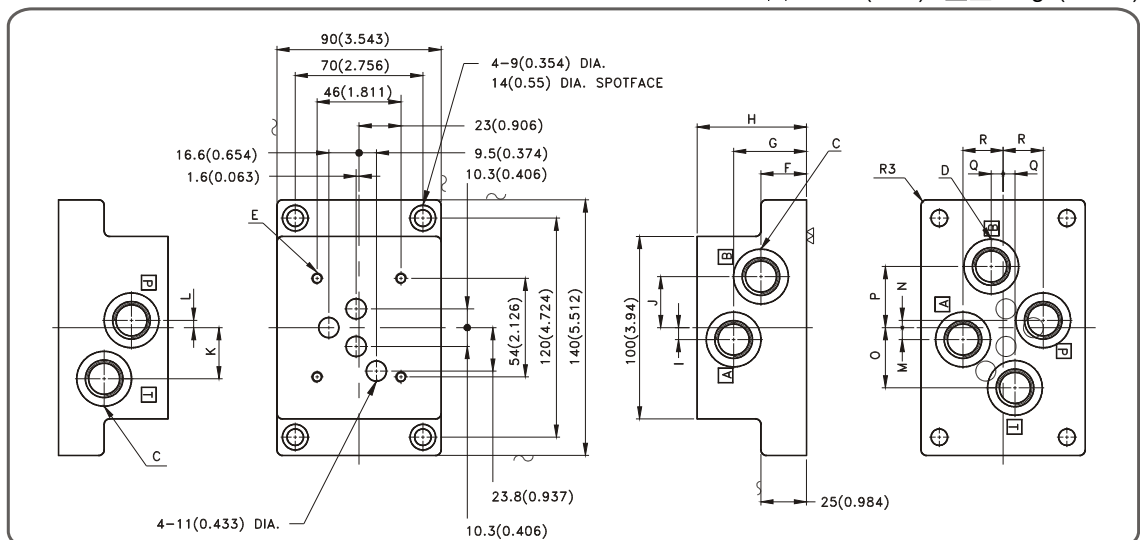
■ M03-**-B-*

單位: mm (inch) 重量: 1kgs(2.3lbs)



■ M03-**-S/SB-*

單位: mm (inch) 重量: 1kgs(2.3lbs)



固定底板安裝尺寸對照表

單位: mm(inch)

型 式		C	D	E	F			
M03-03	-S	-1	4-3/8"PT	-	4-M6×1P	25(0.98)		
		-2	4-3/8"NPT	-	4-1/4-20UNC	25(0.98)		
		-3	4-3/8"SAE-2B	-	4-1/4-20UNC	25(0.98)		
	-B	-1	-	4-3/8"PT	4-M6×1P	-		
		-2	-	4-3/8"NPT	4-1/4-20UNC	-		
		-3	-	4-3/8"SAE-2B	4-1/4-20UNC	-		
	-SB	-1	4-3/8"PT	4-3/8"PT	4-M6×1P	25(0.98)		
		-2	4-3/8"NPT	4-3/8"NPT	4-1/4-20UNC	25(0.98)		
		-3	4-3/8"SAE-2B	4-3/8"SAE-2B	4-1/4-20UNC	25(0.98)		
型 式		G	H	I	J	K	L	
M03-03	-S	-1	40(1.58)	60(2.36)	6.5(0.26)	28(1.1)	28(1.1)	4.0(0.16)
		-2	40(1.58)	60(2.36)	6.5(0.26)	28(1.1)	28(1.1)	4.0(0.16)
		-3	40(1.58)	60(2.36)	6.5(0.26)	28(1.1)	28(1.1)	4.0(0.16)
	-B	-1	-	-	-	-	-	-
		-2	-	-	-	-	-	-
		-3	-	-	-	-	-	-
	-SB	-1	40(1.58)	60(2.36)	6.5(0.26)	28(1.1)	28(1.1)	4.0(0.16)
		-2	40(1.58)	60(2.36)	6.5(0.26)	28(1.1)	28(1.1)	4.0(0.16)
		-3	40(1.58)	60(2.36)	6.5(0.26)	28(1.1)	28(1.1)	4.0(0.16)
型 式		M	N	O	P	Q	R	
M03-03	-S	-1	-	-	-	-	-	
		-2	-	-	-	-	-	
		-3	-	-	-	-	-	
	-B	-1	-	-	-	-	-	
		-2	-	-	-	-	-	
		-3	-	-	-	-	-	
	-SB	-1	6.5(0.26)	4.0(0.16)	33(1.3)	33.5(1.32)	6.5(0.26)	22(0.87)
		-2	6.5(0.26)	4.0(0.16)	33(1.3)	33.5(1.32)	6.5(0.26)	22(0.87)
		-3	6.5(0.26)	4.0(0.16)	33(1.3)	33.5(1.32)	6.5(0.26)	22(0.87)

固定底板安裝尺寸對照表

單位: mm(inch)

型 式			C	D	E	F		
M03-04	-S	-1	4-1/2"PT	-	4-M6×1P	25(0.98)		
		-2	4-1/2"NPT	-	4-1/4-20UNC	25(0.98)		
		-3	4-1/2"SAE-2B	-	4-1/4-20UNC	25(0.98)		
	-B	-1	-	4-1/2"PT	4-M6×1P	-		
		-2	-	4-1/2"NPT	4-1/4-20UNC	-		
		-3	-	4-1/2"SAE-2B	4-1/4-20UNC	-		
	-SB	-1	4-1/2"PT	4-1/2"PT	4-M6×1P	25(0.98)		
		-2	4-1/2"NPT	4-1/2"NPT	4-1/4-20UNC	25(0.98)		
		-3	4-1/2"SAE-2B	4-1/2"SAE-2B	4-1/4-20UNC	25(0.98)		
型 式			G	H	I	J	K	L
M03-04	-S	-1	40(1.58)	60(2.36)	6.5(0.26)	28(1.1)	28(1.1)	4.0(0.16)
		-2	40(1.58)	60(2.36)	6.5(0.26)	28(1.1)	28(1.1)	4.0(0.16)
		-3	40(1.58)	60(2.36)	6.5(0.26)	28(1.1)	28(1.1)	4.0(0.16)
	-B	-1	-	-	-	-	-	-
		-2	-	-	-	-	-	-
		-3	-	-	-	-	-	-
	-SB	-1	40(1.58)	60(2.36)	6.5(0.26)	28(1.1)	28(1.1)	4.0(0.16)
		-2	40(1.58)	60(2.36)	6.5(0.26)	28(1.1)	28(1.1)	4.0(0.16)
		-3	40(1.58)	60(2.36)	6.5(0.26)	28(1.1)	28(1.1)	4.0(0.16)
型 式			M	N	O	P	Q	R
M03-04	-S	-1	-	-	-	-	-	-
		-2	-	-	-	-	-	-
		-3	-	-	-	-	-	-
	-B	-1	-	-	-	-	-	-
		-2	-	-	-	-	-	-
		-3	-	-	-	-	-	-
	-SB	-1	6.5(0.26)	4.0(0.16)	33(1.3)	33.5(1.32)	6.5(0.26)	22(0.87)
		-2	6.5(0.26)	4.0(0.16)	33(1.3)	33.5(1.32)	6.5(0.26)	22(0.87)
		-3	6.5(0.26)	4.0(0.16)	33(1.3)	33.5(1.32)	6.5(0.26)	22(0.87)

固定底板安裝尺寸對照表

單位: mm(inch)

型 式			C	D	E	F		
M03-06	-S	-1	4-3/4"PT	-	4-M6×1P	25(0.98)		
		-2	4-3/4"NPT	-	4-1/4-20UNC	25(0.98)		
	-B	-1	-	4-3/4"PT	4-M6×1P	-		
		-2	-	4-3/4"NPT	4-1/4-20UNC	-		
	-SB	-1	4-3/4"PT	4-3/4"PT	4-M6×1P	25(0.98)		
		-2	4-3/4"NPT	4-3/4"NPT	4-1/4-20UNC	25(0.98)		
型 式			G	H	I	J	K	L
M03-06	-S	-1	40(1.58)	60(2.36)	6.5(0.26)	28(1.1)	28(1.1)	4.0(0.16)
		-2	40(1.58)	60(2.36)	6.5(0.26)	28(1.1)	28(1.1)	4.0(0.16)
	-B	-1	-	-	-	-	-	-
		-2	-	-	-	-	-	-
	-SB	-1	40(1.58)	60(2.36)	6.5(0.26)	28(1.1)	28(1.1)	4.0(0.16)
		-2	40(1.58)	60(2.36)	6.5(0.26)	28(1.1)	28(1.1)	4.0(0.16)
型 式			M	N	O	P	Q	R
M03-06	-S	-1	6.5(0.26)	4.0(0.16)	33(1.3)	33.5(1.32)	6.5(0.26)	22(0.87)
		-2	6.5(0.26)	4.0(0.16)	33(1.3)	33.5(1.32)	6.5(0.26)	22(0.87)
	-B	-1	6.5(0.26)	4.0(0.16)	33(1.3)	33.5(1.32)	6.5(0.26)	22(0.87)
		-2	6.5(0.26)	4.0(0.16)	33(1.3)	33.5(1.32)	6.5(0.26)	22(0.87)
	-SB	-1						
		-2						